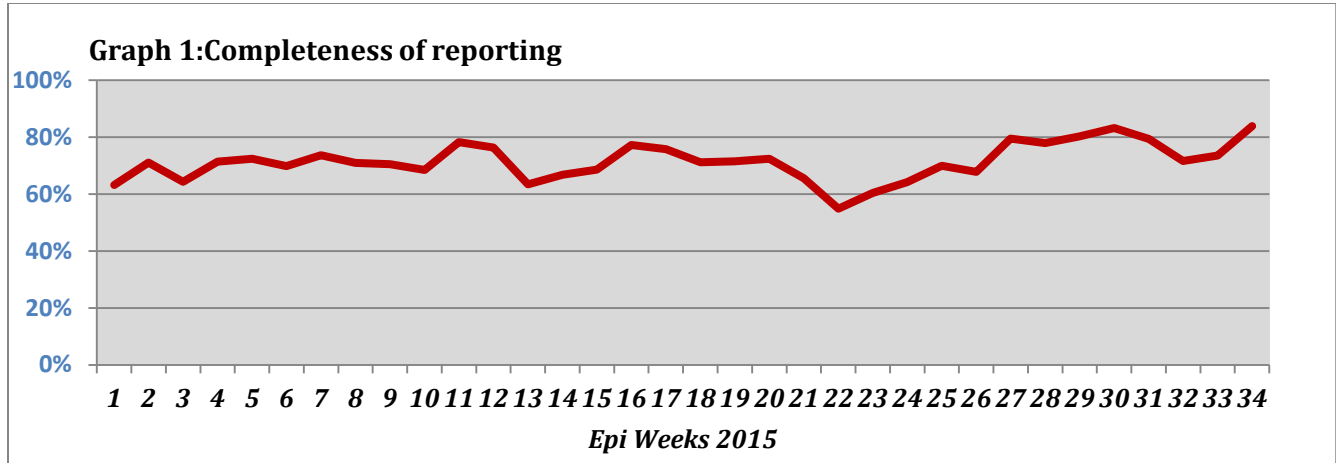


Highlights:

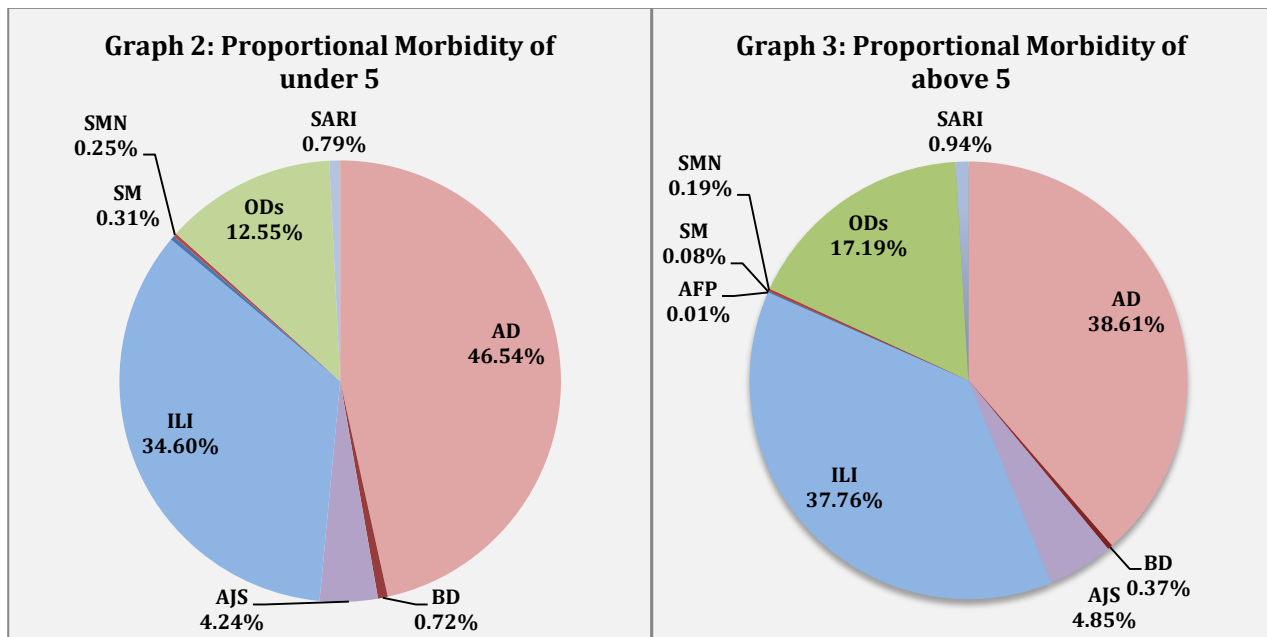
- ❖ 1 AFP case was detected in Damascus.
- ❖ **Completeness& Timeliness of Reporting**
- ❖ The overall completeness of reporting was 84%; (797 out of total 950 EWARS sentinel sites). (See Graph 1). 14 governorates have reported this week.



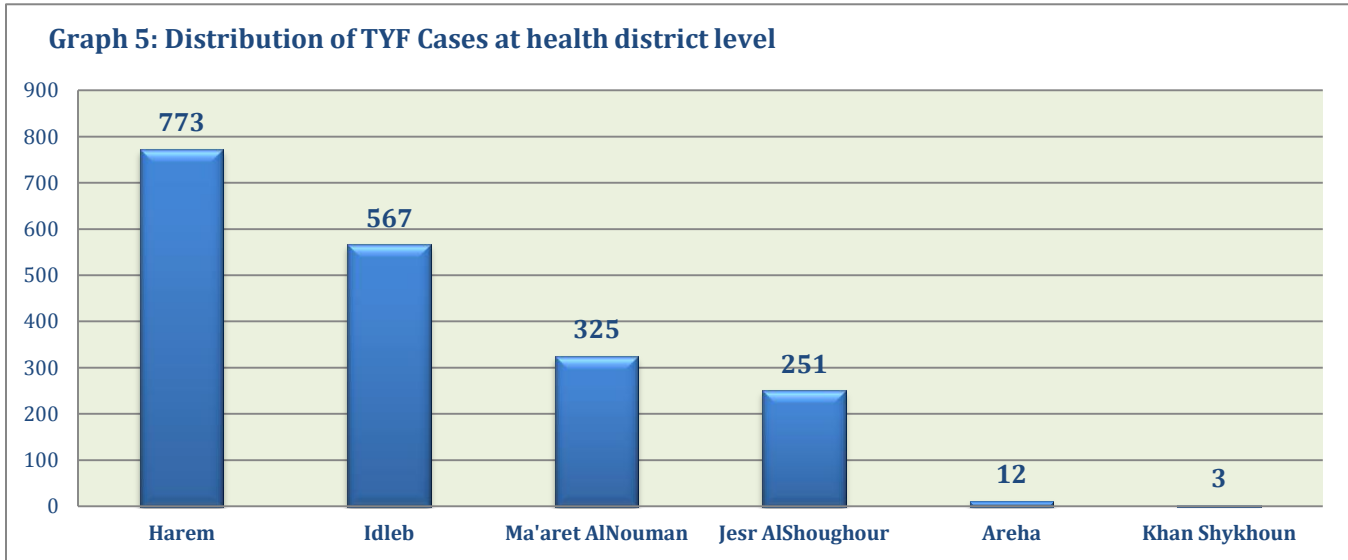
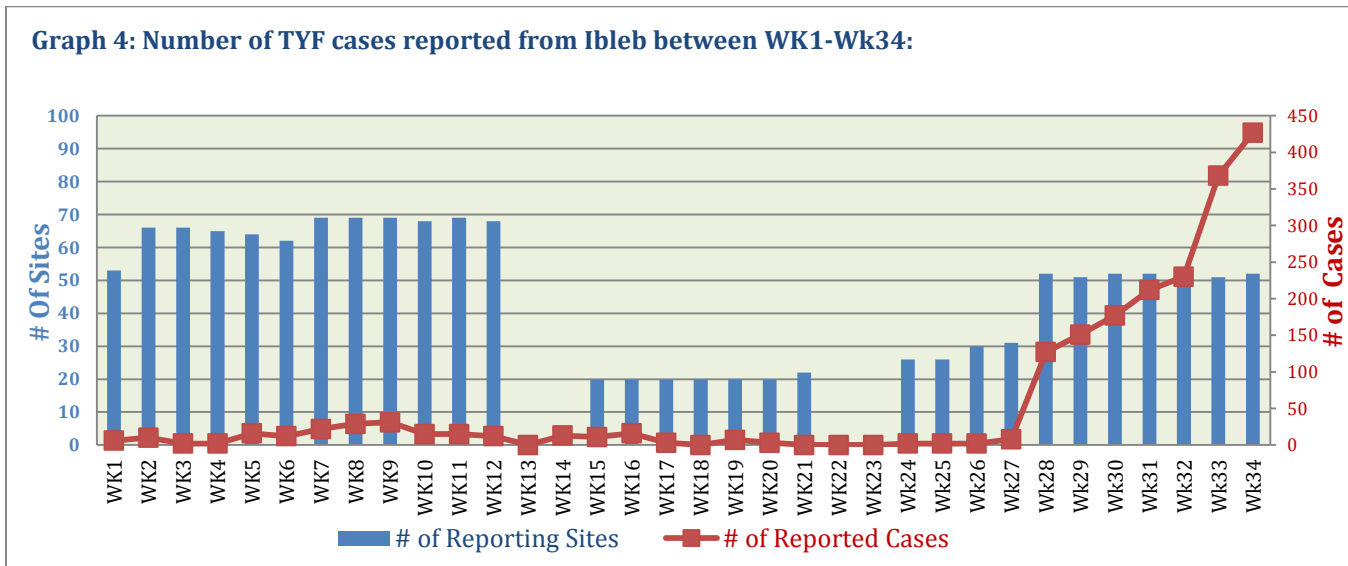
- ❖ Timeliness of reporting is 72%.

The Morbidity Cases

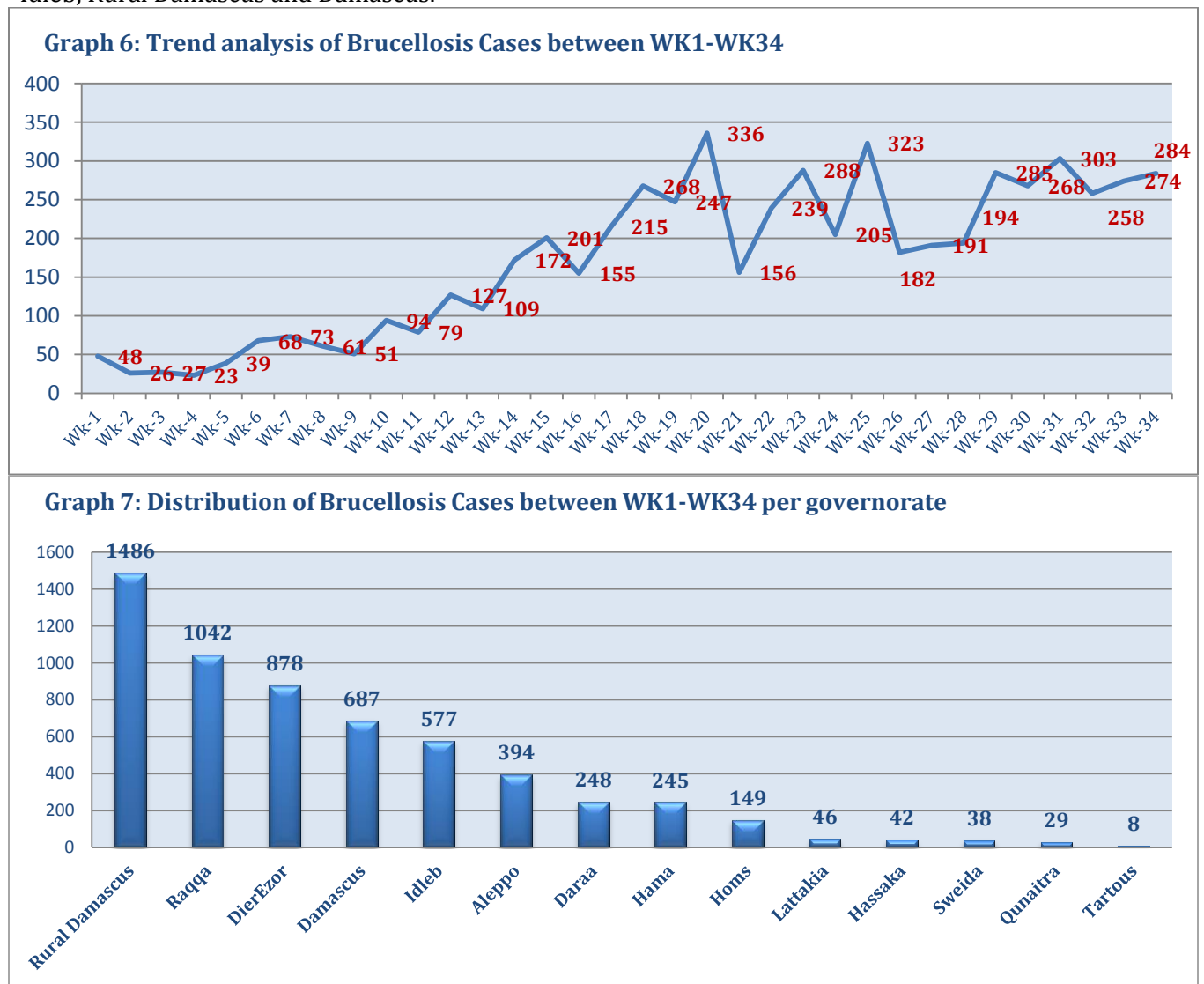
- ❖ Out of the 200,314 total consultations, a total of 21,668 EWARS notifiable cases were reported; of which 9,150 cases were Acute Diarrhoea (42%), 7,869 cases were Influenza like Illness (36%), 990 cases of AJS, 189 cases of Severe Acute Respiratory Infection, 115 cases of Bloody Diarrhoea, 47 cases of Suspected Meningitis, 41 cases of Suspected Measles, and 1 AFP case.
- ❖ Graphs 2 and 3 below show the proportional morbidity among < 5 and ≥ 5 year age groups respectively.



- ❖ AD constitutes (46.54%) among < 5 and (38.61%) among ≥ 5, while ILI constitutes (34.60%) of the cases among <5 and (37.76%) among ≥ 5.
- ❖ 51% of cases were distributed among males. 54% of the cases were distributed among ≥5 age group.
- ❖ In total 3,266 cases were reported as “other diseases”. The most important diseases reported within this group were: 561 cases of Typhoid (most of which were reported from Idleb 76%, and DierEzor 12), 478 cases of Leishmaniasis (most of which were reported from Idleb 57%, and Hamah 21%), 284 cases of Brucellosis (most of which were reported from Idleb 37%, Rural Damascus 24%, and Damascus 11%), 43 cases of Pertussis, and 26 cases of TB.
- ❖ Graph 4 and 5 below show the trend analysis of Typhoid cases reported from Idleb and the distribution of cases per district respectively. It shows that Harem district is still reporting the highest number of cases. Noting that there was zero reporting on week 13, 14- 22 and 23.



- ❖ Graph 6 and 7 below show the trend analysis of Brucellosis cases reported from all governorates and the distribution of cases per governorate respectively. It shows that the accumulative number of cases is higher in Rural Damascus, Raqqa and DierEzor while the highest number of cases reported for this week was from Idleb, Rural Damascus and Damascus.



❖ The Response

Acute flaccid paralysis: Stool sample was collected from the AFP case and sent to the reference lab in Damascus. The next round of Polio national vaccination campaign will be implemented between 18 and 22 of October. The annualized rate is 3 up to this week.

Bloody Diarrhoea: Most cases were reported from inaccessible areas in DierEzor and Idleb, no samples have been collected from the detected cases. All the cases were managed properly

Measles: Blood samples have been collected from some cases and sent to the reference lab in Damascus.

Brucellosis: Health educational sessions at health facilities level, have been conducted to improve food safety. Brochures for raising the awareness on Brucellosis prevention measures have been distributed to most governorates. As for the increased number of cases reported in Idleb, WHO is working with the focal point in Idleb to provide patients there with needed medicines for managing the cases.

Meningitis: Cases were managed according to the national protocol; and investigation forms were filled for some cases but not all; it shows that most of the cases are viral meningitis not bacterial. Preventive therapy was provided as necessary for contacts of the probable bacterial meningitis.

Typhoid: Most cases were reported from inaccessible areas in Idleb, WHO is working with the focal point in Idleb to provide patients with needed medicines to manage the cases.

Table-1: Distribution of cases per age group, and by Governorate-week-34, 2015:

Code	age group	Idleb	Hassaka	Raqqa	Sweida	Qunaitra	Lattakia	Aleppo	Hama	Homs	Daraa	Damascus	DierEzor	Rural Damascus	Tartous	Grand Total	
AD	< 5	466	108	243	174	113	747	598	279	125	106	559	419	490	174	4601	9150
	≥ 5	368	40	91	199	140	710	755	218	98	89	687	366	359	429	4549	
BD	< 5	11	3	6	11	4	8	0	0	0	3	3	19	3	0	71	115
	≥ 5	3	5	1	8	8	6	0	0	0	5	3	3	2	0	44	
AWD	< 5	0	0	0	0	0	0	0	0	0	0	0	0	0	0	0	0
	≥ 5	0	0	0	0	0	0	0	0	0	0	0	0	0	0	0	
AJS	< 5	198	2	46	0	4	7	63	13	20	2	22	32	10	0	419	990
	≥ 5	166	6	9	12	7	27	117	42	38	2	84	24	26	11	571	
ILI	< 5	446	26	0	141	155	905	307	79	7	40	326	439	201	349	3421	7869
	≥ 5	383	13	0	307	296	983	222	88	17	50	530	408	347	804	4448	
AFP	< 5	0	0	0	0	0	0	0	0	0	0	0	0	0	0	0	1
	≥ 5	0	0	0	0	0	0	0	0	0	0	1	0	0	0	1	
SM	< 5	5	0	11	0	0	1	2	1	0	0	4	4	3	0	31	41
	≥ 5	2	0	3	0	0	0	0	0	0	0	2	2	1	0	10	
SMN	< 5	1	0	9	2	0	4	0	3	0	0	5	0	1	0	25	47
	≥ 5	2	0	2	1	0	0	2	10	0	0	3	0	2	0	22	
SARI	< 5	47	2	0	5	0	0	0	8	0	0	10	6	0	0	78	189
	≥ 5	26	1	0	6	0	1	0	34	0	0	43	0	0	0	111	
Others	< 5	648	0	17	0	69	17	219	52	12	1	93	41	69	3	1241	3266
	≥ 5	577	3	12	8	92	102	356	186	35	21	247	140	240	6	2025	
Total Sum of < 5		1822	141	332	333	345	1689	1189	435	164	152	1022	960	777	526	9887	21668
Total Sum of ≥ 5		1527	68	118	541	543	1829	1452	578	188	167	1600	943	977	1250	11781	
Total		3349	209	450	874	888	3518	2641	1013	352	319	2622	1903	1754	1776	21668	