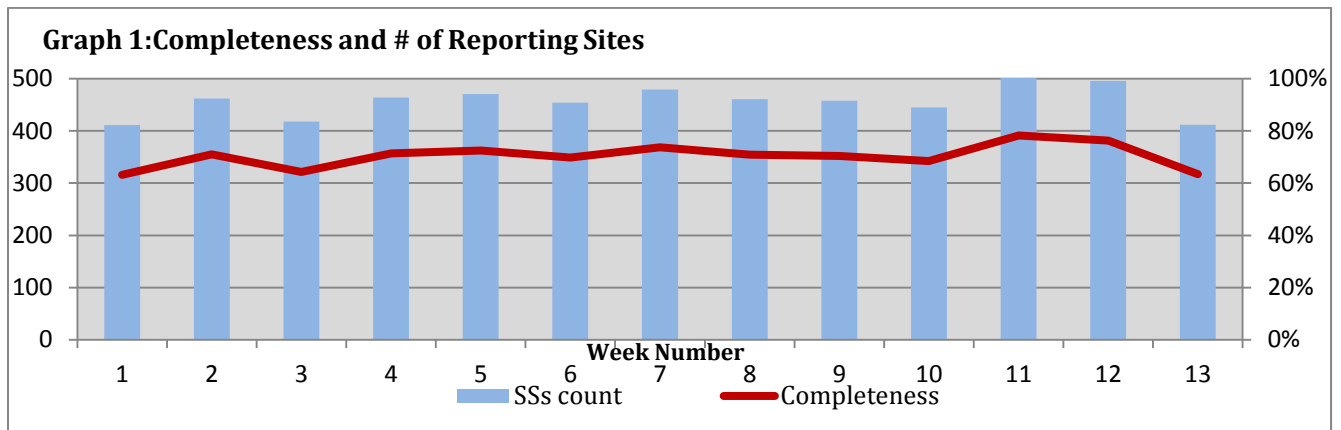


Highlights:

- ❖ 7 AFP cases were detected in Damascus (5), Hamah (1), and Raqua (1).
- ❖ A notable decrease in number of AJS cases was noticed this week; However, Idleb, where high number of cases used to be reported, did not report this week due to sever security situation.
- ❖ An increase in number of SARI cases was noticed this week.

Completeness& Timeliness of Reporting

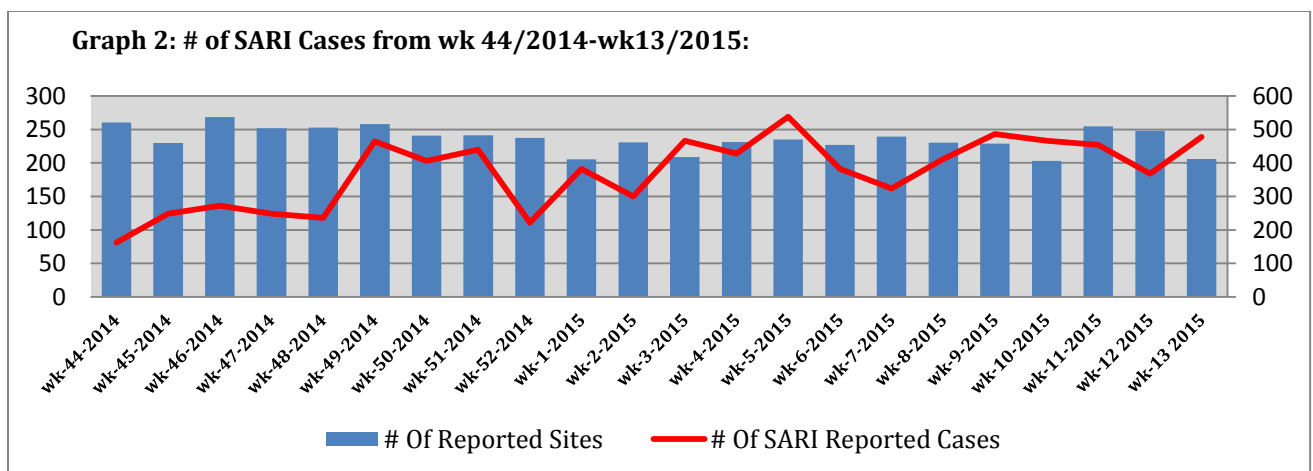
- ❖ The overall completeness of reporting was 63%; (412 out of total 650 EWARS sentinel sites). (See Graph 1). 13 governorates have reported this week.



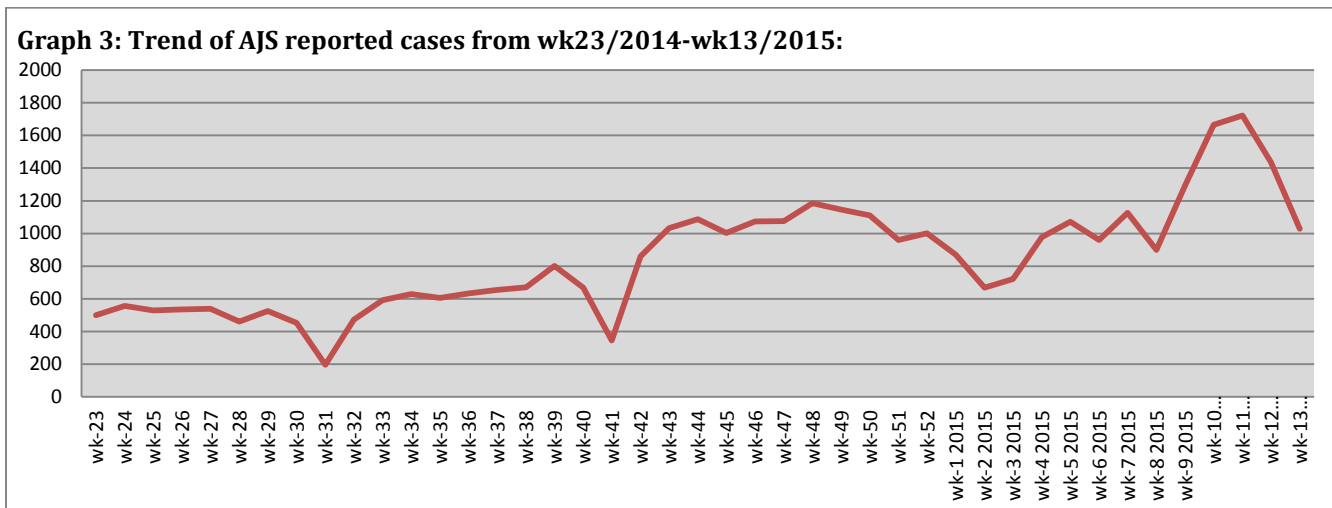
- ❖ Timeliness of reporting is 51%.

The Morbidity Cases

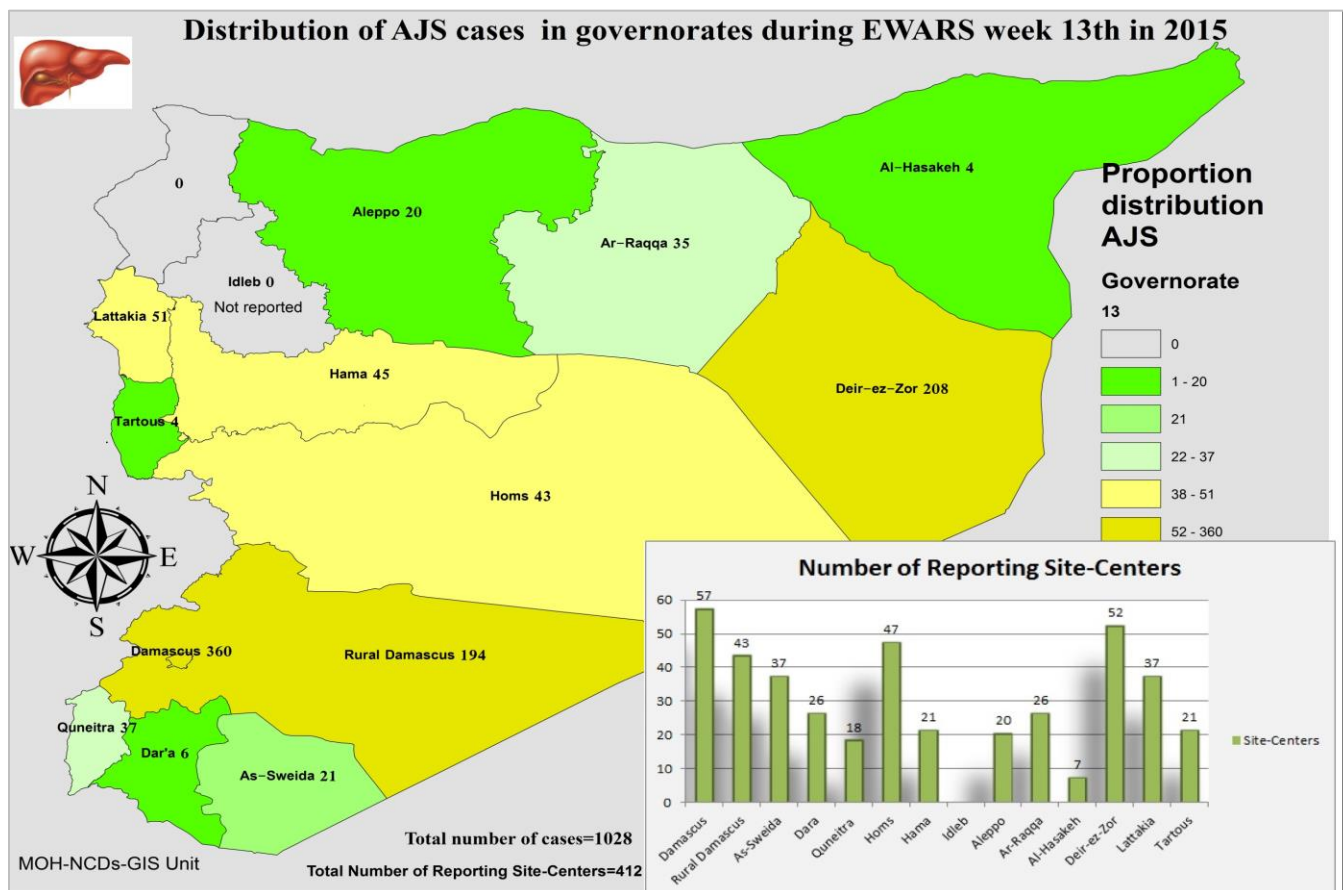
- ❖ Out of the 191,515 total consultations, a total of 16,147 cases were reported; of which 9,272 cases were Influenza like Illness (57.4%), 3,359 cases were Acute Diarrhoea (21%), 1,028 cases of Acute Jaundice Syndrome, 239 cases of Sever Acute Respiratory Infection, 66 cases of Bloody Diarrhoea, 29 cases of Suspected Measles, 13 cases of Meningitis, and 7 AFP cases.
- ❖ Below chart reflects the trend in the number of SARI cases in 2014 and 2015 in the period between week 44 - 2014 and week 13-2015



- ❖ Graph 3 displays the trend of the (36,346) AJS cases between wk23/2014-wk13/2015. The distribution of the cases per governorates shows that Damascus, DierEzor, and Rural Damascus have the highest number of cases for this week.



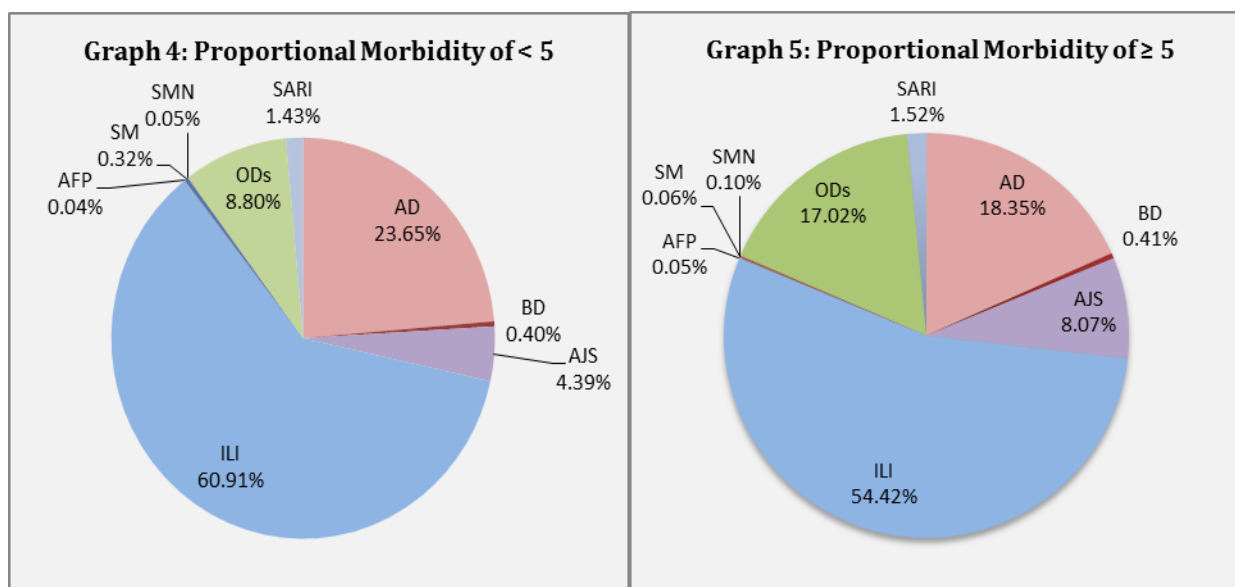
- ❖ Below map display the distribution of AJS cases for week 13, per governorate:



- ❖ In total, 2,134 cases were reported as “other diseases”. The most important diseases reported within this group were: 378 cases of Leishmaniasis (most of which were reported from Hamah 34% and Rural Damascus 27%), 118 cases of Typhoid (most of which were reported from DierEzor 58% and Rural

Damascus 30%), 109 cases of Brucellosis (most of which were reported from Raqua 35%, Rural Damascus 22%, and Damascus 20%), 28 cases of Pertussis, and 20 cases of TB.

- ❖ 54% of the cases were distributed among ≥ 5 age group.
- ❖ ILI consists (60,91%) of the cases among <5 and (54,42%) among ≥ 5 , while AD cases consists (23,65%) among <5 and (18,35%) among ≥ 5 .
- ❖ Graphs 4 and 5 below show the proportional morbidity among < 5 and ≥ 5 year age groups respectively.



- ❖ 51% of cases were distributed among males.

❖ The Response

AFP: Stool samples were collected from the AFP cases and sent to the reference lab in Damascus. A new national vaccination campaign was implemented in this week between 22th and 26th March.

AJS: Line list of cases showed that most of the cases (over 80%) reported in Damascus were among over 15 years old while most of the cases reported in Raqua were among young children. This is very much consistent with the difference in the WASH situation between the two governorates were most adults are already immuned in Al Raqua due to having the disease in the childhood. Another 100,000 copies of the brochures are being printed to reach higher number of people.

Meningitis: Meningitis cases detected are not clustered. Cases were managed properly; and investigation forms were filled for some cases but not all; it shows that most of the cases are viral meningitis not bacterial. Preventive therapy was provided as necessary for contacts of the probable bacterial meningitis cases.

Table-1: Distribution of cases per age group, and by Governorate-week-13, 2015:

Code	age group	Hassaka	Raqua	Sweida	Qunaitra	Lattakia	Aleppo	Hamah	Homs	Daraa	Damascus	DierEzor	Rural Damascus	Tartous	Grand Total	
AD	< 5	94	68	90	77	163	129	101	36	110	306	312	224	57	1767	3359
	≥ 5	33	38	106	99	105	87	80	25	92	392	287	171	77	1592	
BD	< 5	3	0	5	1	9	0	0	0	3	3	5	0	1	30	66
	≥ 5	1	0	1	9	3	0	1	0	7	3	7	3	1	36	
AWD	< 5	0	0	0	0	0	0	0	0	0	0	0	0	0	0	0
	≥ 5	0	0	0	0	0	0	0	0	0	0	0	0	0	0	
AJS	< 5	2	23	3	12	13	8	7	21	2	82	123	32	0	328	1028
	≥ 5	2	12	18	25	38	12	38	22	4	278	85	162	4	700	
ILI	< 5	6	16	408	88	1205	345	190	53	127	453	846	400	413	4550	9272
	≥ 5	3	17	602	183	500	190	159	71	216	841	932	440	568	4722	
AFP	< 5	0	1	0	0	0	0	0	0	0	2	0	0	0	3	7
	≥ 5	0	0	0	0	0	0	1	0	0	3	0	0	0	4	
SM	< 5	0	6	9	0	1	0	0	1	0	3	4	0	0	24	29
	≥ 5	0	5	0	0	0	0	0	0	0	0	0	0	0	5	
SMN	< 5	0	0	1	0	0	0	2	0	0	1	0	0	0	4	13
	≥ 5	0	0	0	0	0	0	4	0	0	4	0	1	0	9	
SARI	< 5	31	0	6	0	1	0	21	0	0	24	24	0	0	107	239
	≥ 5	18	0	24	0	2	0	16	0	0	67	5	0	0	132	
Others	< 5	6	32	0	72	14	112	45	68	49	38	43	171	7	657	2134
	≥ 5	9	81	12	92	94	138	174	126	69	184	130	345	23	1477	
Total Sum of < 5		142	146	522	250	1406	594	366	179	291	912	1357	827	478	7470	16147
Total Sum of ≥ 5		66	153	763	408	742	427	473	244	388	1772	1446	1122	673	8677	
Total		208	299	1285	658	2148	1021	839	423	679	2684	2803	1949	1151	16147	