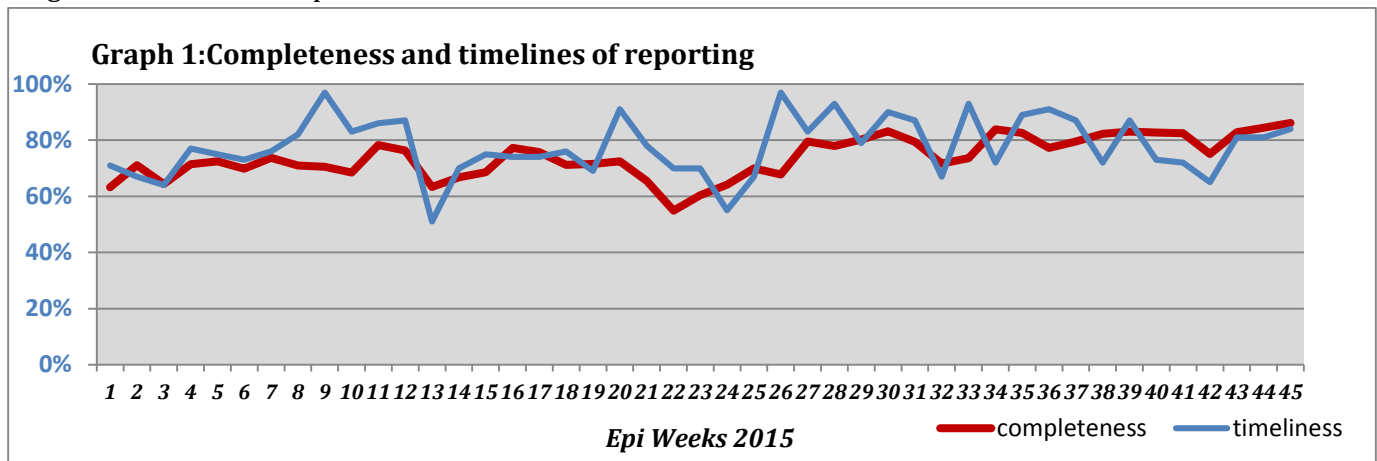


Highlights:

- ❖ 4 AFP cases were detected in Damascus, Rural Damascus, Homs, and Aleppo.
- ❖ 1 AWD case was detected in Rural Damascus through the routine surveillance.
- ❖ Remarkable increase in pertussis cases in DierEzor.

❖ Completeness & Timeliness of Reporting

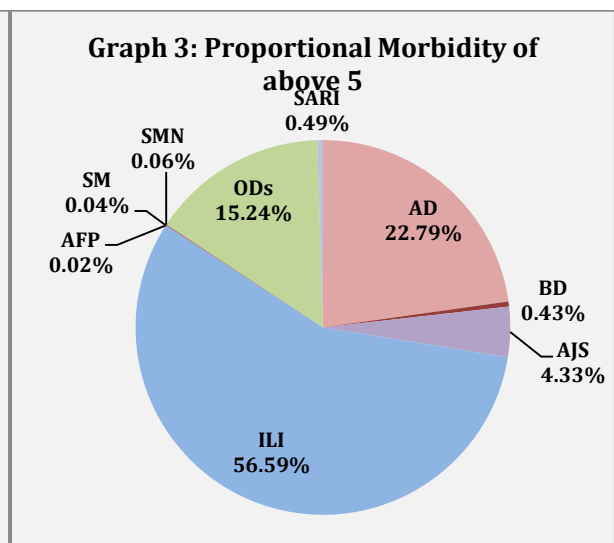
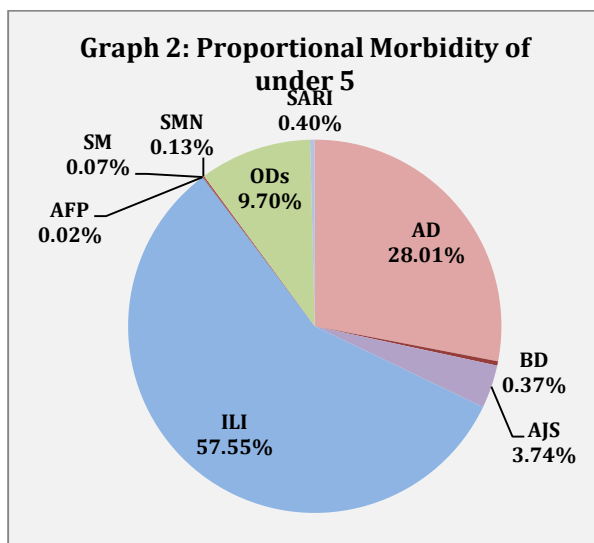
- ❖ The overall completeness of reporting was 86%; (845 out of total 981 EWARS sentinel sites). (See Graph 1). 14 governorates have reported this week.



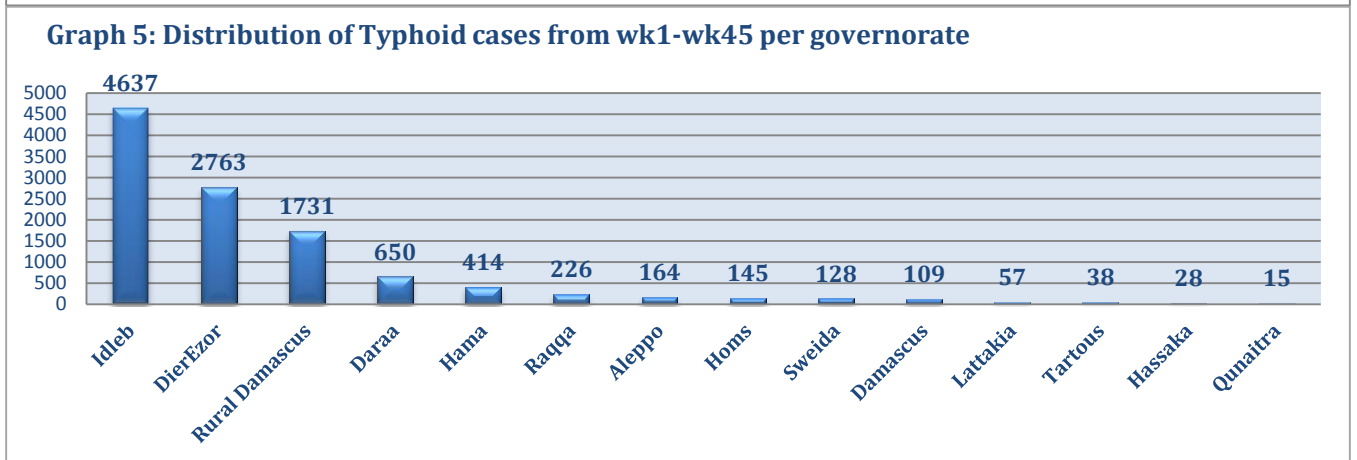
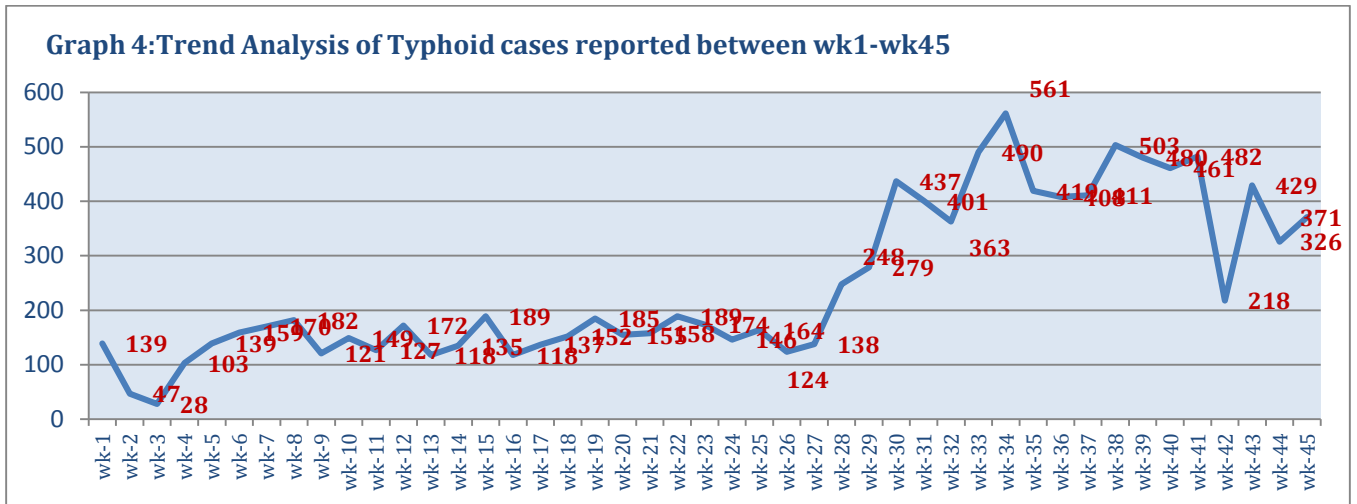
- ❖ Timeliness of reporting is 84%.

❖ The Morbidity Cases

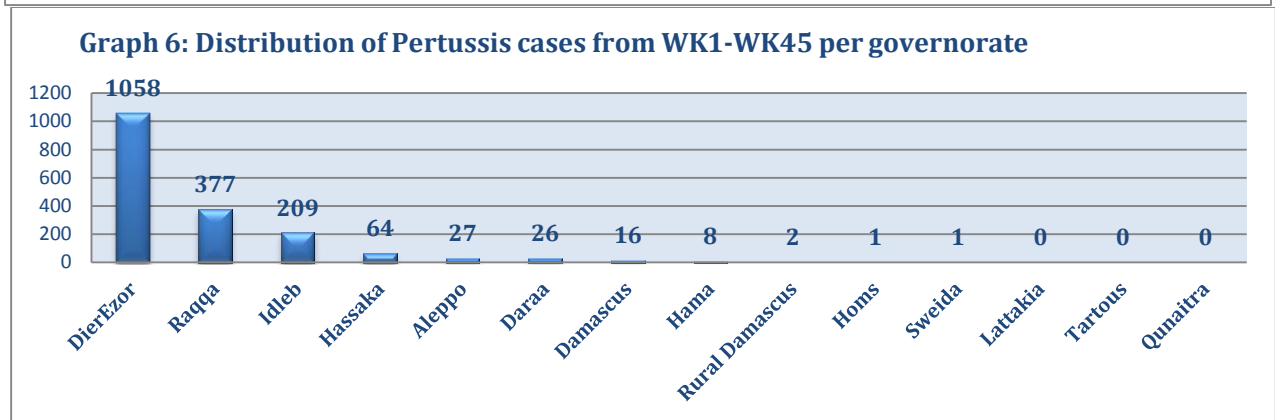
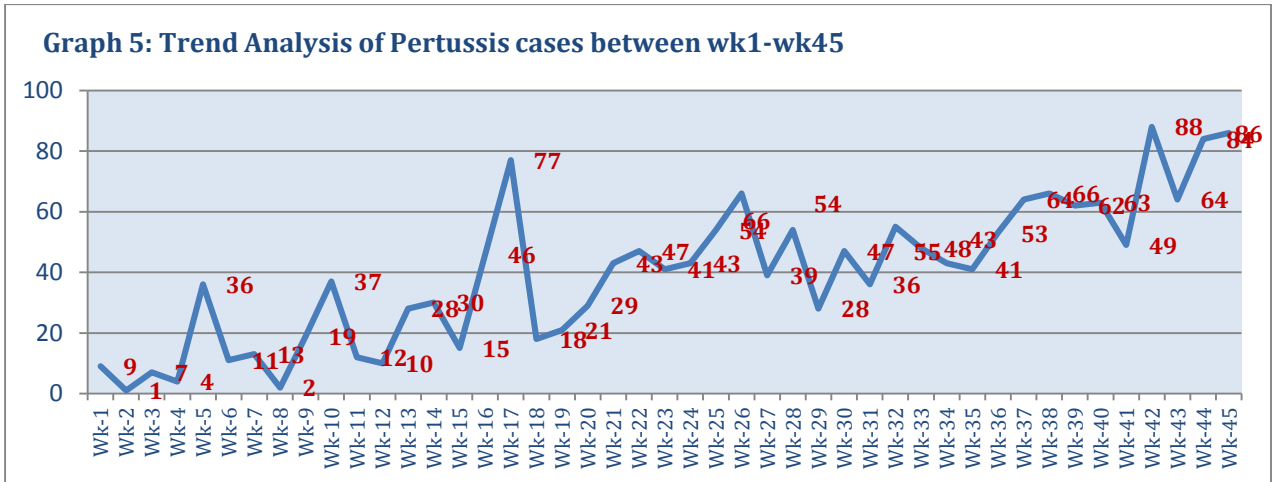
- ❖ Out of the 190,841 total consultations, a total of 23,372 EWARS notifiable cases were reported; of which 12,948 cases were Influenza like Illness (55%), 5,707 cases were Acute Diarrhoea (24%), 924 cases of AJS, 102 cases of Sever Acute Respiratory Infection, 92 cases of Bloody Diarrhoea, 21 cases of Suspected Meningitis, 12 cases of Suspected Measles, and 4 cases of Acute Flaccid Paralysis.
- ❖ Graphs 2 and 3 below show the proportional morbidity among < 5 and ≥ 5 year age groups respectively.



- ❖ AD constitutes (28 %) among < 5 and (22.79%) among ≥ 5, while ILI constitutes (57.55%) of the cases among <5 and (56.59%) among ≥ 5.
- ❖ 50% of cases were distributed among males. 55% of the cases were distributed among ≥5 age group.
- ❖ In total 3,562 cases were reported as “other diseases”. The most important diseases reported within this group were; 510 cases of Leishmaniasis (most of which were reported from Idleb 46%, Rural Damascus 16% and Hamah 10%), 371 cases of Typhoid (most of which were reported from Idleb 67%, DierEzor 14%, and Daraa 10%), 145 cases of Brucellosis (most of which were reported from Idleb 30%, Rural Damascus 14%, and Daraa 14%), 86 cases of Pertussis (were reported from DierEzor 77% and Idleb 17%), and 20 cases TB.
- ❖ Graph 4 and 5 below show the trend analysis of Typhoid cases reported from all governorates and the distribution of cases per governorates respectively. It shows that that the accumulative number of cases is higher in Idleb, DierEzor, and Rural Damascus.



- ❖ Graph 6 and 7 below show the trend analysis of Pertussis cases reported from all governorates and the distribution of cases per governorates respectively. It shows that the accumulative number of cases is higher in DierEzor, Raqqa, and Idleb and the reported cases for this week are from DeirEzor, Idleb and Raqqa.



❖ The Response

Acute flaccid paralysis: Stool sample were collected from AFP cases and sent to the reference lab in Damascus. Sub-National polio vaccination campaign will be implemented in the hard to reach areas between 22 and 26 of November. The annualized rate is 3 up to this week

Acute Watery Diarrhoea: The case was admitted to a private hospital in Rural Damascus, RDT was not processed by the RRT of Rural Damascus Health Directorate as the clinical investigation showed that; the suspected case is not accordance with the standard case definition of cholera, therefore, no laboratory culture was taken. The case treated properly and discharged from the hospital on the 4th of November.

Pertussis: the cases were detected in DeirEzor, Raqqa, and Idlib. Where the routine vaccination percentage is decreased due to access difficulties and the shortage of vaccines supplies. Ministry of Health is obtaining the needed security approvals to send the vaccines to rural of DierEzor.

Meningitis: Cases were managed according to the national protocol; and investigation forms were filled for some cases but not all; it shows that most of the cases are viral meningitis not bacterial. Preventive therapy was provided as necessary for contacts of the probable bacterial meningitis.

Typhoid and other water borne diseases: Ministry of Health provided Health Directorates with Chlorine Tablets to be distributed in the areas which have no access to safe drinking water.

Table-1: Distribution of cases per age group, and by Governorate-week-45, 2015:

Code	age group	Idleb	Hassaka	Raqqa	Sweida	Qunaitra	Lattakia	Aleppo	Hama	Homs	Daraa	Damascus	DierEzor	Rural Damascus	Tartous	Grand Total
AD	< 5	388	157	215	76	105	258	341	150	97	113	397	258	243	60	2858
	≥ 5	342	81	46	111	154	238	457	97	36	99	480	330	253	125	2849
BD	< 5	0	2	0	2	4	2	1	3	1	4	5	12	2	0	38
	≥ 5	0	5	0	13	13	3	0	2	0	1	1	11	5	0	54
AWD	< 5	0	0	0	0	0	0	0	0	0	0	0	0	0	0	0
	≥ 5	0	0	0	0	0	0	0	0	0	0	0	0	0	0	0
AJS	< 5	179	4	38	2	4	5	48	9	10	21	11	28	22	1	382
	≥ 5	141	2	9	17	13	51	92	34	10	30	57	23	43	20	542
ILI	< 5	485	129	15	226	162	1617	931	158	3	210	421	568	372	575	5872
	≥ 5	414	62	10	458	633	1457	870	276	17	256	610	516	454	1043	7076
AFP	< 5	0	0	0	0	0	0	0	0	0	0	1	0	1	0	2
	≥ 5	0	0	0	0	0	0	1	0	1	0	0	0	0	0	2
SM	< 5	0	0	0	1	1	1	0	1	0	0	0	2	1	0	7
	≥ 5	0	0	0	0	0	0	0	0	0	0	0	5	0	0	5
SMN	< 5	0	0	1	1	0	0	0	7	1	0	3	0	0	0	13
	≥ 5	0	0	3	0	0	0	1	1	0	0	3	0	0	0	8
SARI	< 5	5	10	0	0	0	0	1	15	0	0	8	2	0	0	41
	≥ 5	5	6	0	3	0	0	1	8	0	0	38	0	0	0	61
Others	< 5	506	10	4	9	74	21	449	32	11	27	41	48	102	2	1336
	≥ 5	424	28	0	21	114	165	590	140	62	80	210	143	241	8	2226
Total Sum of < 5		1563	312	273	317	350	1904	1771	375	123	375	887	918	743	638	10549
Total Sum of ≥ 5		1326	184	68	623	927	1914	2012	558	126	466	1399	1028	996	1196	12823
Total		2889	496	341	940	1277	3818	3783	933	249	841	2286	1946	1739	1834	23372

