

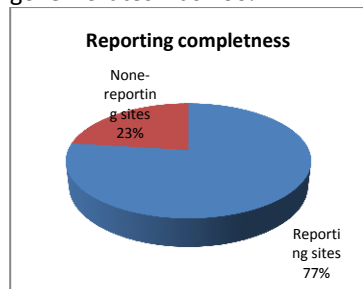
Highlights:

The number of sentinel sites increased to reach 131 sites as part of the expansion process

I. Completeness & Timeliness of Reporting

The reporting completeness was 77%; (101 out of 131 EWARS sentinel surveillance sites). Eleven out of 14 governorates in Syria reported this week; see Graph-1. In the eleven governorates, from where data were received, 101 out of 117 (86%) EWARS sentinel sites reported this week.

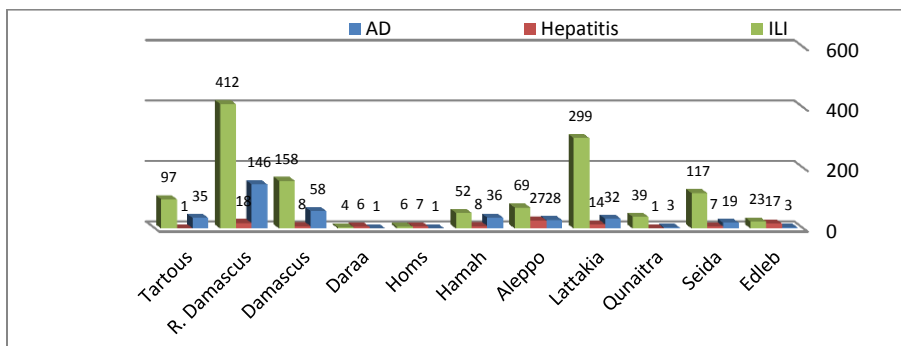
The timeliness among reporting governorates was 100%.



II. The Morbidity & Mortality Cases

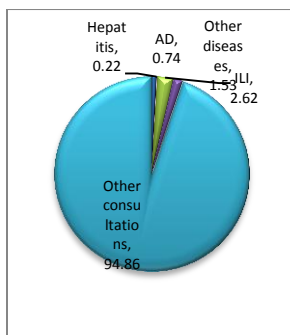
Out of 48,586 consultations, 2,507 were for EWARS reportable health conditions. The highest percentage was for ILI 51% (1,276 cases) followed by the AD 14% (362 cases), in addition to 114 cases of suspected hepatitis, 6 TB cases and 3 suspected measles. The reported "other cases" were 746 most of which were Leishmaniasis (236), lice (365) scabies (89), 9 brucellosis, and 5 typhoid cases.

Graph-2: Distribution of ILI, AD and Hepatitis Cases by Governorate



Graph (3) illustrates the proportion of cases in relation to the number of consultations in all reporting governorates (excluding one sentinel sites in Aleppo and one in Darra which did not report total number of consultations). Table-1 shows the proportion of cases to the total number of consultations by governorates.

Graph 3: pro. of cases to the total consultations by diseases



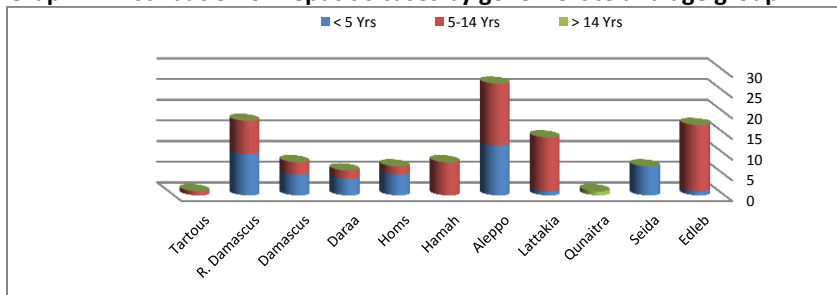
Governorates	ILI	Hepatitis	AD	Other diseases	Other consultations
Edleb	9.47	7.00	1.23	0.00	82.30
Sweida	8.27	0.50	1.34	1.13	88.76
Qunaitra	8.26	0.21	0.64	0.85	90.04
Lattakia	5.49	0.26	0.59	0.00	93.66
Aleppo	2.33	0.91	0.95	7.34	88.37
Hama	1.50	0.23	1.04	11.30	85.94
Homs	0.09	0.11	0.02	0.06	99.72
Damascus	1.11	0.06	0.41	0.22	98.17
R. Damas	5.81	0.25	2.06	0.59	91.29
Tartous	1.42	0.01	0.51	0.56	97.48

The majority of the cases were among the 5-14 age group (55%, 1,385 cases out of 2,507) Most of these cases were for other diseases (597 out of 746). Had the other diseases been excluded, the majority of the cases would be for the under-five age group. For ILI cases, 56% were for the under-five, 43% for the 5-14 age group and 1% for over 14. The same for AD cases (53% for under-five, 46 % where for 5-14 and 1% for over 14 years old) . For more details please refer to Table-2.

60.5 % of suspected hepatitis was registered among over 5 years old (69 out of 114). Most of these cases were in Aleppo (27 cases), Rural Damascus, (18 cases) and then Edleb (17 cases). In Edleb, the proportion of hepatitis cases to the total consultations reached 7% most of it was for over 5 age group (16 out of 17). While all suspected hepatitis cases reported in Sweida was for under-five age group. See Graph-4 and table 1 & 2.

60.5 % of suspected hepatitis was registered among over 5 years old (69 out of 114). Most of these cases were in Aleppo (27 cases), Rural Damascus, (18 cases) and then Edleb (17 cases). In Edleb, the proportion of hepatitis cases to the total consultations reached 7% most of it was for over 5 age group (16 out of 17). While all suspected hepatitis cases reported in Sweida was for under-five age group. See Graph-4 and table 1 & 2.

Graph-4: Distribution of hepatitis cases by governorate and age group



III. The Response:

The Blood samples were collected from the measles cases and the routine investigation procedures took place in the Damascus (2) and Tartous (1). It showed that the cases reported in Tartous was not vaccinated and it was positive. As a response, a vaccination campaign was carried out in the area (measles vaccination for 6-12 month and MMR for 1-15 years) Please see the table below.

Other response measures were also taken with regard to case management of TB (old cases) and Leishmaniasis in addition to ensuring the implementation of sanitation measures in accordance with available capacity.

Governorate	Sex	Age	Vaccination status	Results
Damascus	Female	5 years	Vaccinated 2 doses	negative
Damascus	Male	16 months	Vaccinated one dose	Positive- post vaccination
Tartous	Male	6 years	Not vaccinated	Positive

Table-2: Distribution of cases per age group, and by Governorate- week-12, 2013

Diseases	Age group	Tartous	Rural Damas	Damascus	Daraa	Homs	Hama	Aleppo	Lattakia	Qunaitra	Sweida	Edleb	Total	Grand Total
AD	< 5 Yrs	20	78	26	1	1	20	18	19	0	9	1	193	362
	5-14 Yrs	15	68	32	0	0	16	10	13	0	10	2	166	
	> 14 Yrs	0	0	0	0	0	0	0	0	3	0	0	3	
Cholera	< 5 Yrs	0	0	0	0	0	0	0	0	0	0	0	0	0
	5-14 Yrs	0	0	0	0	0	0	0	0	0	0	0	0	
	> 14 Yrs	0	0	0	0	0	0	0	0	0	0	0	0	
Hepatitis	< 5 Yrs	0	10	5	4	5	0	12	1	0	7	1	45	114
	5-14 Yrs	1	8	3	2	2	8	15	13	0	0	16	68	
	> 14 Yrs	0	0	0	0	0	0	0	0	1	0	0	1	
ILI	< 5 Yrs	48	222	72	3	6	44	50	218	14	24	12	713	1276
	5-14 Yrs	49	190	86	1	0	8	19	81	12	93	11	550	
	> 14 Yrs	0	0	0	0	0	0	0	0	13	0	0	13	
AFP	< 5 Yrs	0	0	0	0	0	0	0	0	0	0	0	0	0
	5-14 Yrs	0	0	0	0	0	0	0	0	0	0	0	0	
	> 14 Yrs	0	0	0	0	0	0	0	0	0	0	0	0	
Measles and rubella	< 5 Yrs	0	0	2	0	0	0	0	0	0	0	0	2	3
	5-14 Yrs	1	0	0	0	0	0	0	0	0	0	0	1	
	> 14 Yrs	0	0	0	0	0	0	0	0	0	0	0	0	
Tetanus	< 5 Yrs	0	0	0	0	0	0	0	0	0	0	0	0	0
	5-14 Yrs	0	0	0	0	0	0	0	0	0	0	0	0	
	> 14 Yrs	0	0	0	0	0	0	0	0	0	0	0	0	
Meningitis	< 5 Yrs	0	0	0	0	0	0	0	0	0	0	0	0	0
	5-14 Yrs	0	0	0	0	0	0	0	0	0	0	0	0	
	> 14 Yrs	0	0	0	0	0	0	0	0	0	0	0	0	
Local Malaria	< 5 Yrs	0	0	0	0	0	0	0	0	0	0	0	0	0
	5-14 Yrs	0	0	0	0	0	0	0	0	0	0	0	0	
	> 14 Yrs	0	0	0	0	0	0	0	0	0	0	0	0	
Rabies	< 5 Yrs	0	0	0	0	0	0	0	0	0	0	0	0	0
	5-14 Yrs	0	0	0	0	0	0	0	0	0	0	0	0	
	> 14 Yrs	0	0	0	0	0	0	0	0	0	0	0	0	
TB	< 5 Yrs	0	0	3	0	0	0	0	0	0	0	0	3	6
	5-14 Yrs	0	0	0	0	0	0	3	0	0	0	0	3	
	> 14 Yrs	0	0	0	0	0	0	0	0	0	0	0	0	
Others	< 5 Yrs	15	20	9	0	1	25	71	0	3	5	0	149	746
	5-14 Yrs	23	22	23	1	3	367	146	0	1	11	0	597	
	> 14 Yrs	0	0	0	0	0	0	0	0	0	0	0	0	
Total by age group	< 5 Yrs	83	330	117	8	13	89	151	238	17	45	14	1105	2507
	5-14 Yrs	89	288	144	4	5	399	193	107	13	114	29	1385	
	> 14 Yrs	0	0	0	0	0	0	0	0	17	0	0	17	
Grand Total		172	618	261	12	18	488	344	345	47	159	43	2507	