

### Highlights:

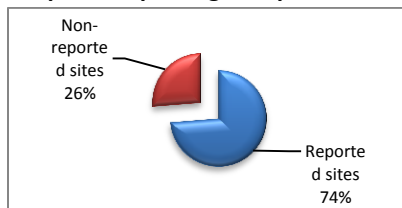
The functionality of the 104 reporting sites under EWARS has been assessed, and it is found that 24 sentinel sites are out of service on temporary basis. Accordingly, to ensure accuracy, the completeness and timeliness of reporting will be measured against 80 functional EWARS sites rather than 104, until the non-functional 24 sites are reactivated or replaced by other functional sites.

### I. Completeness & Timeliness of Reporting

The reporting completeness has reached 57% for the week 47 (59 sentinel sites out of 104), and by considering the only 80 functional sites; the completeness of reporting reached 74% (59 out of 80 sites, excluding the 24 out-of-service sites). Furthermore, Ten governorates have maintained the reporting (i.e., Damascus, Rural Damascus, Qunaitra, Sweida, Hamah, Homs, Latakia, Tartous, Edlib, and Hasakah), with completeness of 97% (59 sentinel sites out of 61).

The timeliness of reporting was 93%, where the delay was observed in one governorate (4 sentinel sites out of 59).

#### Graph-1: Reporting Completeness

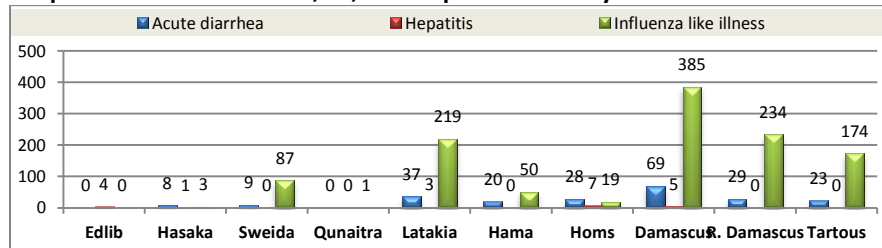


### II. The Morbidity & Mortality Cases

A total of **1512** cases have been reported, in which the highest percentage was for ILI 78% (1172 cases), followed by AD cases 15% (223 cases), in addition to 20 hepatitis cases reported from different governorates, 8 TB cases, and one case of suspected measles reported in Hamah. Also, 88 cases have been reported as other diseases.

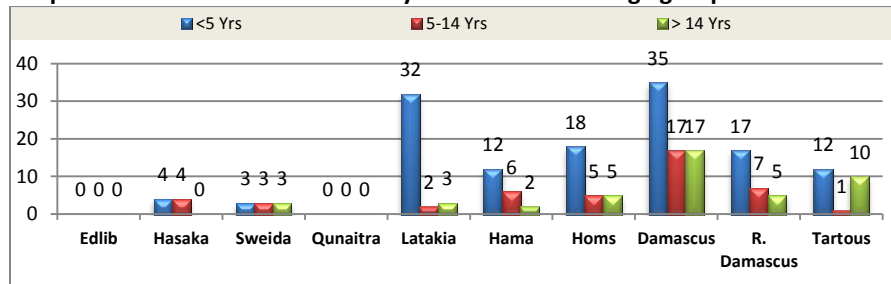
Graph-2 and table 1 provide more details about the distribution of ILI, AD, and Hepatitis cases by disease and governorate.

#### Graph-2: Distribution of AD, ILI, and Hepatitis Cases by Governorate

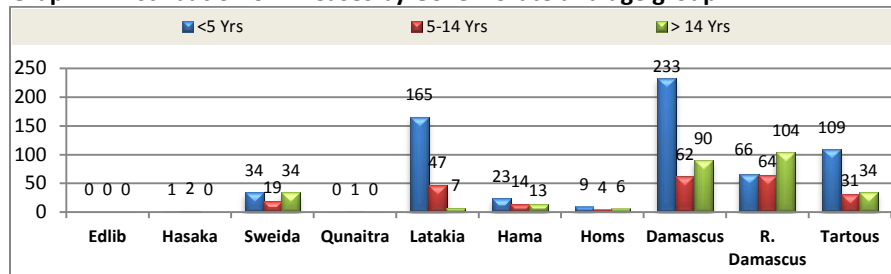


The most affected age group was the **under-five** (52%, 790 cases out of 1512) Where 55% of ILI cases and 60% of AD cases was for under five age group (640 out of 1172 and 113 out of 223 respectively). This was followed by the age group of **more than 14 years** old (377 cases; 25%), and the age group **5-14 years** old (345 cases; 23%). See Graphs 3 & 4.

#### Graph-3: Distribution of AD Cases by Governorate and age group



#### Graph-4: Distribution of ILI Cases by Governorate and age group



### III. The Response

- ◆ A blood sample was collected from the suspected measles case in Hamah, and the result was negative
- ◆ Most of the TB cases (total 8, with 7 in Damascus) were old cases that have been referred to other centres to complete the treatment and follow-up.
- ◆ Hepatitis cases have been followed up, with emphasis on the safety of water, food and health education measures.

**Table-1: Distribution of cases per age group, and by Governorate- week 47**

Disease	Age group	Edlib	Hasaka	Sweida	Qunaitra	Latakia	Hama	Homs	Damascus	R. Damascus	Tartous	Total	Grand Total
Acute diarrhea	<5 Yrs	0	4	3	0	32	12	18	35	17	12	133	223
	5-14 Yrs	0	4	3	0	2	6	5	17	7	1	45	
	> 14 Yrs	0	0	3	0	3	2	5	17	5	10	45	
Cholera	<5 Yrs	0	0	0	0	0	0	0	0	0	0	0	0
	5-14 Yrs	0	0	0	0	0	0	0	0	0	0	0	
	> 14 Yrs	0	0	0	0	0	0	0	0	0	0	0	
Hepatitis	<5 Yrs	1	0	0	0	1	0	2	0	0	0	4	20
	5-14 Yrs	2	1	0	0	1	0	4	5	0	0	13	
	> 14 Yrs	1	0	0	0	1	0	1	0	0	0	3	
Influenza like illness	<5 Yrs	0	1	34	0	165	23	9	233	66	109	640	1172
	5-14 Yrs	0	2	19	1	47	14	4	62	64	31	244	
	> 14 Yrs	0	0	34	0	7	13	6	90	104	34	288	
AFP	<5 Yrs	0	0	0	0	0	0	0	0	0	0	0	0
	5-14 Yrs	0	0	0	0	0	0	0	0	0	0	0	
	> 14 Yrs	0	0	0	0	0	0	0	0	0	0	0	
Measles and rubella	<5 Yrs	0	0	0	0	0	1	0	0	0	0	1	1
	5-14 Yrs	0	0	0	0	0	0	0	0	0	0	0	
	> 14 Yrs	0	0	0	0	0	0	0	0	0	0	0	
Tetanus	<5 Yrs	0	0	0	0	0	0	0	0	0	0	0	0
	5-14 Yrs	0	0	0	0	0	0	0	0	0	0	0	
	> 14 Yrs	0	0	0	0	0	0	0	0	0	0	0	
Meningitis	<5 Yrs	0	0	0	0	0	0	0	0	0	0	0	0
	5-14 Yrs	0	0	0	0	0	0	0	0	0	0	0	
	> 14 Yrs	0	0	0	0	0	0	0	0	0	0	0	
Local Malaria	<5 Yrs	0	0	0	0	0	0	0	0	0	0	0	0
	5-14 Yrs	0	0	0	0	0	0	0	0	0	0	0	
	> 14 Yrs	0	0	0	0	0	0	0	0	0	0	0	
Rabies	<5 Yrs	0	0	0	0	0	0	0	0	0	0	0	0
	5-14 Yrs	0	0	0	0	0	0	0	0	0	0	0	
	> 14 Yrs	0	0	0	0	0	0	0	0	0	0	0	
TB	<5 Yrs	0	0	0	0	0	0	0	2	0	0	2	8
	5-14 Yrs	0	0	0	0	0	0	0	0	0	0	0	
	> 14 Yrs	0	0	0	0	0	1	0	5	0	0	6	
Others	<5 Yrs	0	0	0	0	0	4	0	6	0	0	10	88
	5-14 Yrs	0	0	0	0	0	20	7	15	1	0	43	
	> 14 Yrs	0	0	0	1	0	14	0	20	0	0	35	
Total by age group	<5 Yrs	1	5	37	0	198	40	29	276	83	121	790	1512
	5-14 Yrs	2	7	22	1	50	40	20	99	72	32	345	
	> 14 Yrs	1	0	37	1	11	30	12	132	109	44	377	
<b>Grand Total of Cases</b>		<b>4</b>	<b>12</b>	<b>96</b>	<b>2</b>	<b>259</b>	<b>110</b>	<b>61</b>	<b>507</b>	<b>264</b>	<b>197</b>	<b>1512</b>	<b>1512</b>