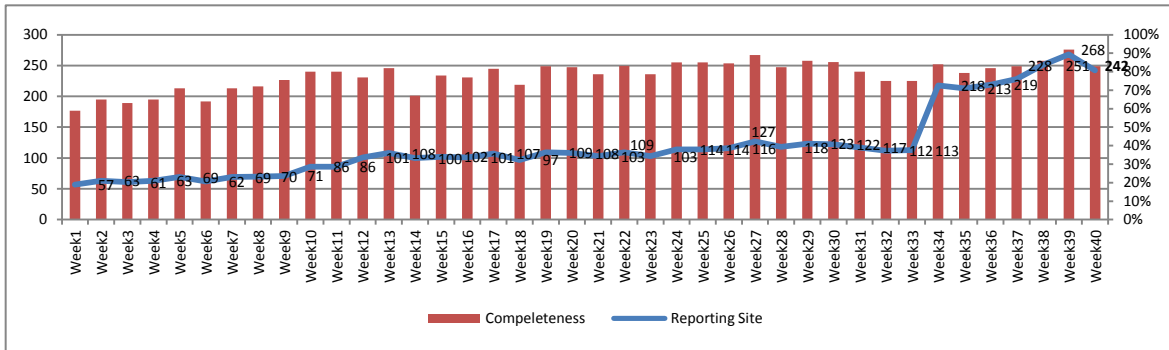


**Highlights:**

- ❖ 4 cases of AFP reported from Alboukamal district in DeirEzOr
- ❖ A decrease in the total number of suspected measles cases continued for this week
- ❖ A lower number of Typhoid cases was reported under other disease in Idleb comparing with previous week
- ❖ 91 cases of SARI were reported, of which 55 from Hamah and 27 from Damascus

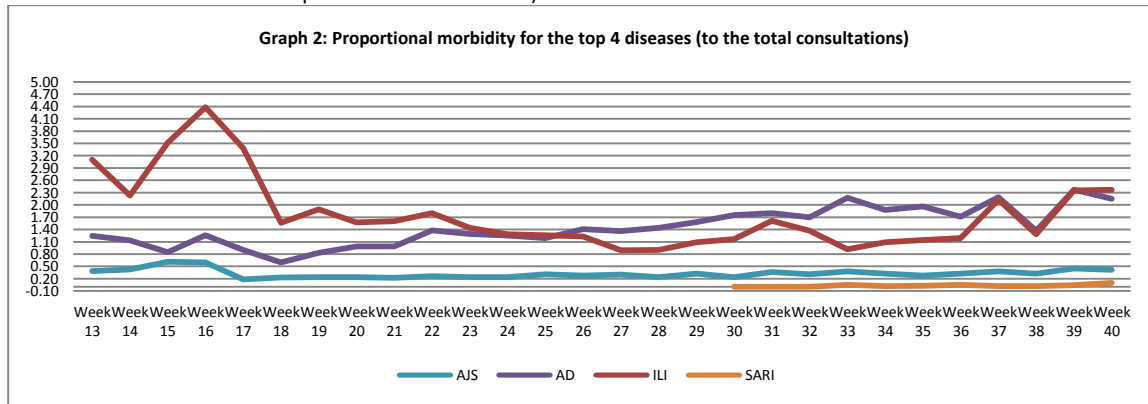
**I. Completeness & Timeliness of Reporting**

- ❖ The overall completeness of reporting was 83%; (242 out of total 292 EWARS sentinel sites) (See Graph 1). 14 governorates have reported this week.
- ❖ Timeliness of reporting is 83 %

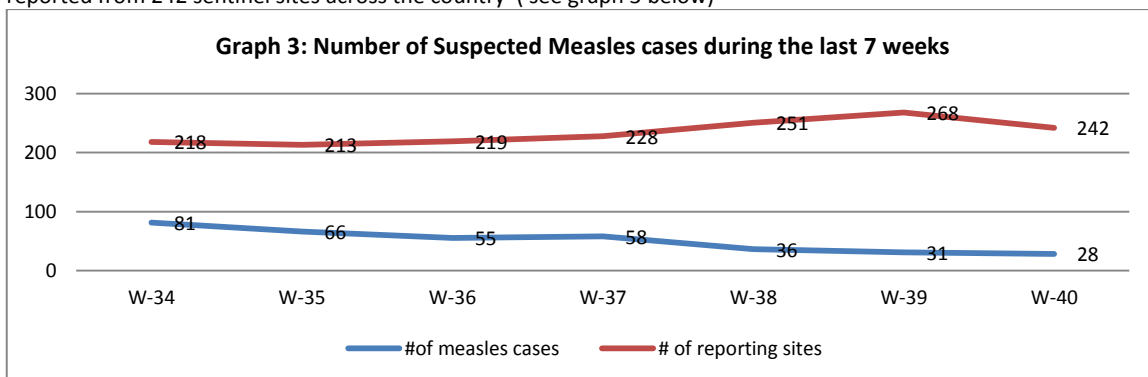


**II. The Morbidity Cases**

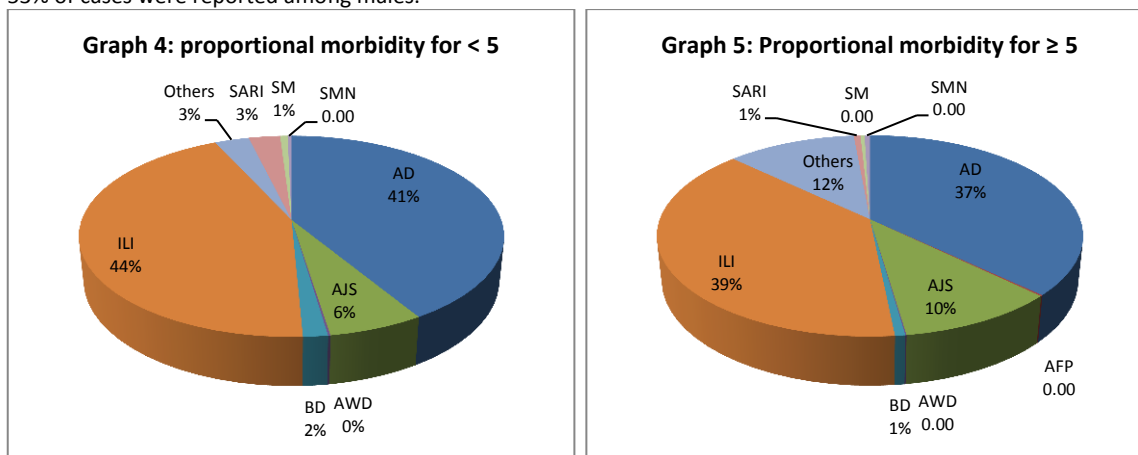
- ❖ Out of the 93,607 total consultations, a total of 5,627 cases were reported; of which 2,219 cases were Influenza like Illness (39%), and 2,107 cases were Acute Diarrhea (37%) and In addition, 450 cases of AJS, 91 cases of Sever Acute Respiratory Infection, 61 cases of Bloody Diarrhea, 28 cases of Suspected Measles, 22 cases of Meningitis, 6 case of Acute Watery Diarrhea and 4 AFP cases. Graph 2 shows the proportional morbidity for the top 4 diseases (to the total consultations, after excluding the data of 10 health facilities that did not report total consultations).



- ❖ The number of suspected measles cases continue to show a remarkable decrease during this week where only 28 cases were reported from 242 sentinel sites across the country ( see graph 3 below)



- ❖ In total, 639 cases were reported as “other diseases”. The most important diseases reported within this group were: 179 cases of Typhoid. **90% of Typhoid cases were reported from Idleb. 71% of Typhoid cases were reported among ≥ 5 year age group.** In addition, 114 cases of Leishmaniasis ( 47 % of leishmaniasis cases were reported in Hamah) and 42 cases of Brucellosis.
- ❖ Cases were equally distributed between the two age groups. The most common cases among < 5 were ILI (44%) and AD cases (41%). Graph 4 and 5 below show the proportional morbidity among < 5 and ≥ 5 year age groups respectively.
- ❖ 53% of cases were reported among males.



### III. The Response

- ❖ **AFP:** The 4 AFP cases were reported from Alboukaml district ( Aisha charity hospital) with symptoms typical for poliomyelitis among under 5 children (hot cases) . One of these cases is not vaccinated and one reported only one dose of OPV. Cases were discharged from the hospital based on the families’ requests before stool samples were collected. Nationwide OPV vaccination campaign will start on 24<sup>th</sup> of October as a response measure to the cluster of hot AFP cases detected in DierEzor
- ❖ **Measles:** MMR vaccination camping for the drop out under five (1-5 years-in the health facilities) and for the age (12-15) in the schools. The campaign will start also on 24<sup>th</sup> of October
- ❖ **TYPHOID:** Double quantities of the required medicines are being sent to the health facilities in the affected areas based on the national protocol to be distributed in coordinated with local health authority in Idleb. UNICEF and WHO also will send aqua tabs to the affected area while WASH sector is working on a permanent solution for water chlorination in the areas.
- ❖ **MENINGITIS:** Meningitis cases detected in different governorates are not clustered. Cases were managed properly; and investigation forms were filled for some cases but not all; It shows that most of the cases are viral meningitis not bacterial. Preventive therapy was provided as necessary for contacts of the probable bacterial meningitis cases.
- ❖ **AWD:** The cases detected were not associated with dehydration and revealed to be AD
- ❖ **Bloody Diarrhea:** Most cases were detected in Alshadadah district in hard to reach areas in Hassakah. No stool sample was collected due to security situation. Cases reported from other governorates were not clustered and they were provided with proper treatment.
- ❖ **SARI:** No samples were collected for from the mentioned cases because the national protocol recommends collecting samples only for the cases admitted to intensive care unit.
- ❖ Other response measures were also taken with regard to case management of Leishmaniasis, Hepatitis and BRU cases. In addition to ensuring the availability of medicines and the implementation of sanitation measures in accordance with available capacity .

**Table-1: Distribution of cases per age group, and by Governorate-week-40, 2013**

Code	Values	Idleb	Hassaka	Raqua	Sweida	Qunaitra	Lattakia	Aleppo	Hamah	Homs	Daraa	Damascus	Dier-Ezor	Rural Damascus	Tartous	Grand Total	
AD	≥ 5	110	184	27	16	9	37	15	63	6	18	228	89	86	115	1003	2107
	< 5	189	244	96	8	12	71	22	106	7	26	115	99	61	48	1104	
AFP	≥ 5	0	0	0	0	0	0	0	0	0	0	0	4	0	0	4	4
	< 5	0	0	0	0	0	0	0	0	0	0	0	0	0	0	0	
AJS	≥ 5	66	5	1	1	10	14	9	43	0	15	80	13	25	1	283	450
	< 5	47	12	12	0	7	13	4	13	0	12	34	2	11	0	167	
AWD	≥ 5	2	0	0	0	0	0	0	0	0	0	0	0	0	0	2	6
	< 5	3	1	0	0	0	0	0	0	0	0	0	0	0	0	4	
BD	≥ 5	1	11	0	0	0	0	0	1	0	1	4	0	0	0	18	61
	< 5	4	24	0	0	0	4	1	0	0	0	6	4	0	0	43	
ILI	≥ 5	80	55	3	83	37	165	14	51	11	23	332	0	128	64	1046	2219
	< 5	139	89	12	100	28	200	23	52	15	25	322	13	99	56	1173	
SARI	≥ 5	0	0	0	0	0	0	0	11	0	0	5	0	0	0	16	91
	< 5	1	3	2	3	0	0	0	44	0	0	22	0	0	0	75	
SM	≥ 5	0	2	0	0	0	0	0	1	0	0	0	7	0	0	10	28
	< 5	0	0	1	0	0	1	0	4	1	0	2	9	0	0	18	
SMN	≥ 5	0	1	2	0	0	0	0	7	0	0	3	0	0	0	13	22
	< 5	1	0	3	0	0	0	0	2	0	0	3	0	0	0	9	
Others	≥ 5	138	9	7	2	7	8	16	79	0	9	143	21	32	0	471	639
	< 5	68	16	4	0	4	7	6	16	0	2	25	6	14	0	168	
Total ≥ 5		397	267	40	102	63	224	54	256	17	66	795	134	271	180	2866	5627
Total < 5		452	389	130	111	51	296	56	237	23	65	529	133	185	104	2761	
<b>Total</b>		<b>849</b>	<b>656</b>	<b>170</b>	<b>213</b>	<b>114</b>	<b>520</b>	<b>110</b>	<b>493</b>	<b>40</b>	<b>131</b>	<b>1324</b>	<b>267</b>	<b>456</b>	<b>284</b>	<b>5627</b>	