

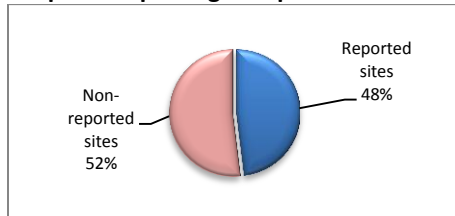
**Highlights:**

- ◆ Despite the improvement in the number of reporting governorates (reached 11 out of 14), the completeness of reporting from the sentinel sites among these governorates has declined from 72% in week 45 to 66%.
- ◆ Noticeable decrease in the number of AD cases compared to the previous weeks.

**I. Completeness of Reporting**

The overall reporting completeness reached 48% for the week 46 (50 sentinel sites out of 104) where 11 governorates have reported (i.e., Damascus, Rural Damascus, Qunaitra, Sweida, Hamah, Homs, Lattakia, Tartous Edleb, Raqa and Hasakah); while the completeness of reporting from the sentinel sites among these 11 governorates was 66%.

**Graph-1: Reporting Completeness**

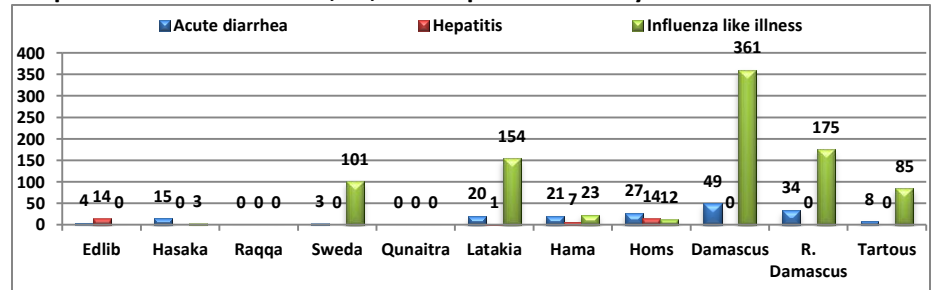


**II. The Morbidity & Mortality Cases**

A total of **1145** cases have been reported, in which the highest percentage was for ILI 80% (914 cases) followed by AD cases 16% (181 cases). The number of hepatitis cases reported

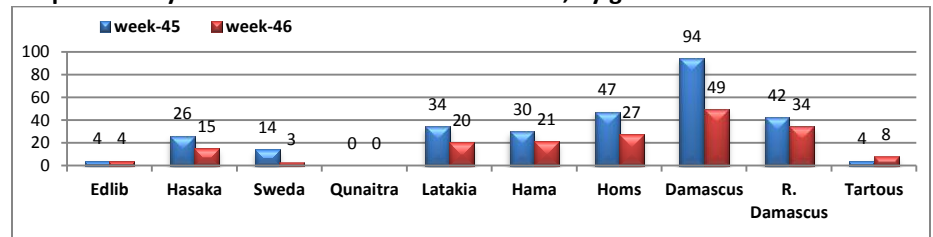
from different governorates (Edlib, Hamah and Homs) was 36 cases while 12 Leishmaniasis cases were detected in Hamah  
 Graph-2 and table 1 provide more details about the distribution of cases by disease and governorate.

**Graph-2: Distribution of AD, ILI, and Hepatitis Cases by Governorate**

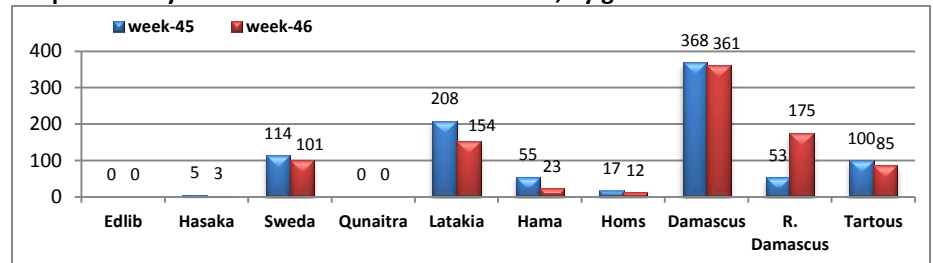


By comparing the AD and ILI cases for the weeks 45 & 46 from the same reporting sentinel sites, it is found that the number of AD cases has declined noticeably from 295 to 181. See Graphs 3 & 4.

**Graph-3: Analysis of the AD cases over two weeks, by governorate**

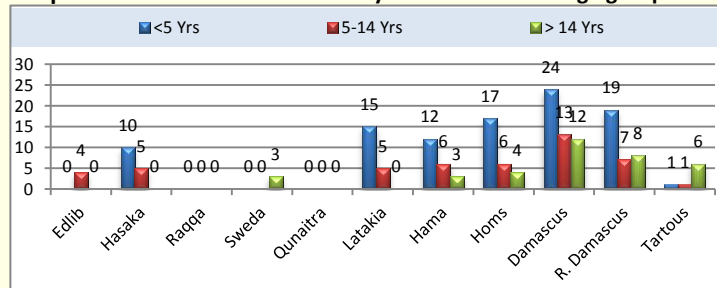


**Graph-4: Analysis of the ILI cases over two weeks, by governorate**

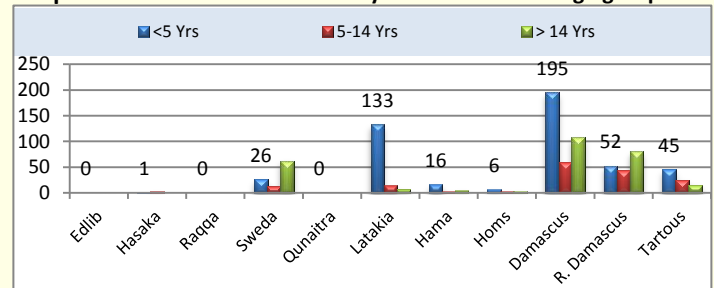


The most affected age group was the **under-five** (51.5%, 590 cases out of 1145); out of which 52% of the cases are ILI (474 out of 914 cases) and 54% are AD cases (98 out of 181), followed by the age group **of more than 14 years** old with 321 reported cases (28%) and then the age group 5-14 years old (234 cases, 20.5%). See Graphs 5 & 6.

**Graph-5: Distribution of AD Cases by Governorate and age group**



**Graph-6: Distribution of ILI Cases by Governorate and age group**



### III. The Response:

Close follow-up for the Hepatitis A cases, *that was detected in Edlib in week 45 (14 cases)*, has continued over the second week. Apart from this, only routine response was taking place, as no significant matter has been reported.

**Table-1: Distribution of cases per age group, and by Governorate- week 46**

Grand Total	Age group	Edlib	Hasaka	Raqqqa	Sweda	Qunaitra	Latakia	Hama	Homs	Damascus	R. Damascus	Tartous	Total	Grand Total
Disease Acute diarrhea	<5 Yrs	0	10	0	0	0	15	12	17	24	19	1	98	181
	5-14 Yrs	4	5	0	0	0	5	6	6	13	7	1	47	
	> 14 Yrs	0	0	0	3	0	0	3	4	12	8	6	36	
Cholera	<5 Yrs	0	0	0	0	0	0	0	0	0	0	0	0	0
	5-14 Yrs	0	0	0	0	0	0	0	0	0	0	0	0	
	> 14 Yrs	0	0	0	0	0	0	0	0	0	0	0	0	
Hepatitis	<5 Yrs	2	0	0	0	0	0	4	10	0	0	0	16	36
	5-14 Yrs	12	0	0	0	0	1	2	4	0	0	0	19	
	> 14 Yrs	0	0	0	0	0	0	1	0	0	0	0	1	
Influenza like illness	<5 Yrs	0	1	0	26	0	133	16	6	195	52	45	474	914
	5-14 Yrs	0	2	0	13	0	14	3	3	59	43	25	162	
	> 14 Yrs	0	0	0	62	0	7	4	3	107	80	15	278	
AFP	<5 Yrs	0	0	0	0	0	0	0	0	0	0	0	0	0
	5-14 Yrs	0	0	0	0	0	0	0	0	0	0	0	0	
	> 14 Yrs	0	0	0	0	0	0	0	0	0	0	0	0	
Measles and rubella	<5 Yrs	0	0	0	0	0	0	0	0	0	0	0	0	0
	5-14 Yrs	0	0	0	0	0	0	0	0	0	0	0	0	
	> 14 Yrs	0	0	0	0	0	0	0	0	0	0	0	0	
Tetanus	<5 Yrs	0	0	0	0	0	0	0	0	0	0	0	0	0
	5-14 Yrs	0	0	0	0	0	0	0	0	0	0	0	0	
	> 14 Yrs	0	0	0	0	0	0	0	0	0	0	0	0	
Meningitis	<5 Yrs	0	0	0	0	0	0	0	0	0	0	0	0	0
	5-14 Yrs	0	0	0	0	0	0	0	0	0	0	0	0	
	> 14 Yrs	0	0	0	0	0	0	0	0	0	0	0	0	
Local Malaria	<5 Yrs	0	0	0	0	0	0	0	0	0	0	0	0	0
	5-14 Yrs	0	0	0	0	0	0	0	0	0	0	0	0	
	> 14 Yrs	0	0	0	0	0	0	0	0	0	0	0	0	
Rabies	<5 Yrs	0	0	0	0	0	0	0	0	0	0	0	0	0
	5-14 Yrs	0	0	0	0	0	0	0	0	0	0	0	0	
	> 14 Yrs	0	0	0	0	0	0	0	0	0	0	0	0	
TB	<5 Yrs	0	0	0	0	0	0	0	0	0	0	0	0	1
	5-14 Yrs	0	0	0	0	0	0	0	0	0	0	0	0	
	> 14 Yrs	0	0	0	0	0	0	0	1	0	0	0	1	
Others	<5 Yrs	0	0	0	0	0	0	2	0	0	0	0	2	13
	5-14 Yrs	0	0	0	0	0	0	6	0	0	0	0	6	
	> 14 Yrs	0	0	0	0	0	0	3	1	0	1	0	5	
Total by age group	<5 Yrs	2	11	0	26	0	148	34	33	219	71	46	590	1145
	5-14 Yrs	16	7	0	13	0	20	17	13	72	50	26	234	
	> 14 Yrs	0	0	0	65	0	7	11	9	119	89	21	321	
Grand Total of Cases		18	18	0	104	0	175	62	55	410	210	93	1145	1145