

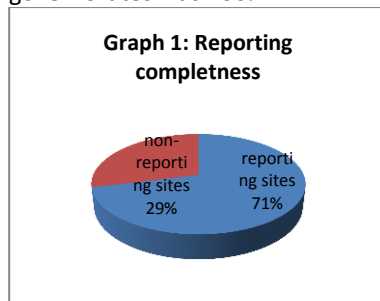
Highlights:

An increase in the number of suspected hepatitis cases has been noted in many governorates (Eleven governorates have reported suspected hepatitis cases for this week)

I. Completeness & Timeliness of Reporting

The reporting completeness was 71%; (69 out of 97 EWARS sentinel surveillance sites). Thirteen out of 14 governorates in Syria reported this week; see Graph-1. In the thirteen governorates, from where data were received, 69 out of 91 (76%) EWARS sentinel sites reported this week.

The timeliness among reporting governorates was 100%.



II. The Morbidity & Mortality Cases

Out of 46,017 consultations 3,362 were for EWARS reportable health conditions. The highest percentage was for ILI 65% (2,177 cases) followed by the AD 20% (673 cases), in addition, 217 cases of suspected hepatitis, one suspected measles and two confirmed cases of TB were reported. The reported “other cases” were 292 most of which were Leishmaniasis (181 cases), scabies (57) and Lice (31) and chickenpox (15) . For more details please refer to Graph-2 which shows the distribution of cases by governorates. Graph (3) illustrates the proportion of cases in relation to the number of consultations in all governorates excluding Daraa which did not report the total number of consultations for this week (Alsanamin centre)

Graph-2: Distribution of ILI, AD and Hepatitis Cases by Governorate

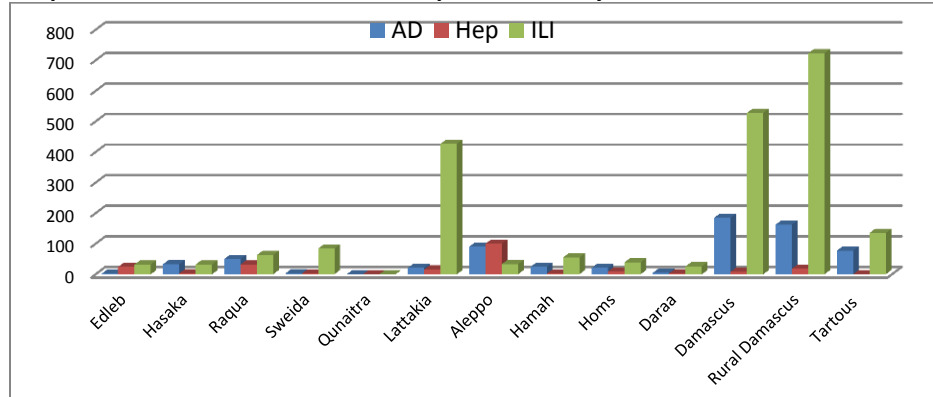
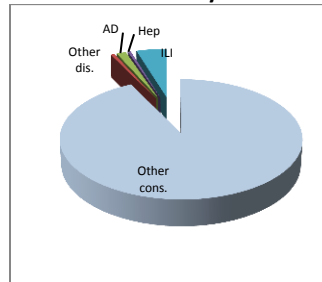


Table-1 shows the proportion of cases to the total number of consultations by disease and by governorates.

Graph 3: pro. of cases to the total consultations by diseases

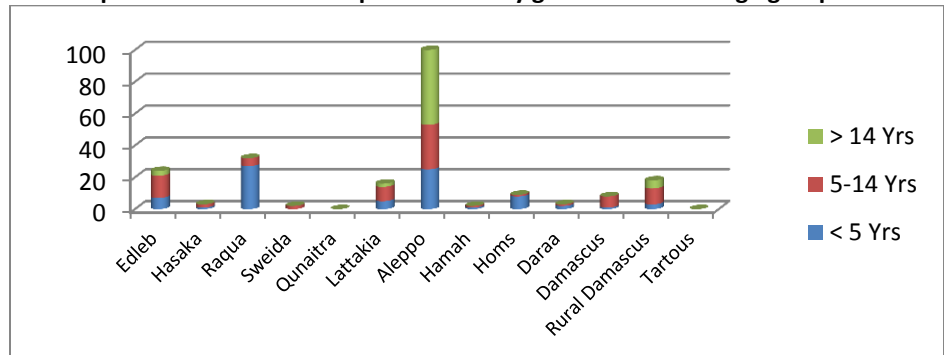


The majority of the cases (39.5%) were reported among under-five age group (1,329 cases out of 3,362) where 40.5% of ILI cases (882 out of 2,177 cases) and 46% of AD cases (312 out of 673), were for under- five age group. This was followed by the age groups of 5-14 years old with 32% (1075 out 3,362) and then more than 14 years old (28.5%). For more details please refer to Table-2.

Table-1: pro. Of (%) cases to the total number of consultations by disease and by governorates.

Governorates	ILI	AD	Hep	Other diseases	Other consult.
Idelb	11.43	0.71	8.57	0	79.29
Hasaka	0.68	0.7	0.06	0.04	98.51
Raqa	2.47	1.96	1.25	1.73	92.59
Sweida	12.07	0.43	0.29	0	87.21
Qunaitra	0	0	0	0	100
Lattakia	11.34	0.56	0.42	0.29	87.38
Aleppo	1.16	3.16	3.51	2.57	89.6
Hamah	2.05	0.9	0.07	3.69	93.29
Homs	0.96	0.52	0.22	0.1	98.21
Damascus	4.47	1.56	0.07	0.26	93.61
R. Damascus	9.65	2.16	0.24	0.35	87.6
Tartous	3.09	1.76	0	0.05	95.1

Most of the suspected hepatitis A cases reported this week was among over 5 age group (63%, 137 cases out of 217); and most of these cases were reported from Aleppo (46%) where it constitutes 3.5% of the consultations performed in the same sentinel sites (100 cases out of 2846 consultations) See graph 4 and table 1 & 2. **Graph-4: Distribution of hepatitis cases by governorate and age group**



III. The Response:

The suspected measles case reported in Damascus (a boy, 9 years) was discarded as the lab results of the blood sample were negative. Other investigation measures were also taken in the governorate.

Necessary response measures were taken for the leishmaniasis cases which included: managing the cases, ensuring the availability of medicines and ensuring sanitation measures in accordance with available capacity.

Other response measures were taken such as follow-up TB cases and providing TB medicines, ensuring the safety of food and drinking water and health education sessions.

Table-2: Distribution of cases per age group, and by Governorate- week-7, 2013

Diseases	Age group	Tartous	R. Damascus	Damascus	Dara	Homs	Hama	Aleppo	Lattakia	Qunaitra	Sweida	Raqa	Hasaka	Idleb	Total	Grand Total
AD	< 5 Yrs	38	79	63	5	14	11	34	14	0	3	40	11	0	312	673
	5-14 Yrs	14	60	58	0	7	11	30	7	0	0	10	10	1	208	
	> 14 Yrs	25	23	64	0	0	2	26	0	0	0	0	12	1	153	
Cholera	< 5 Yrs	0	0	0	0	0	0	0	0	0	0	0	0	0	0	0
	5-14 Yrs	0	0	0	0	0	0	0	0	0	0	0	0	0	0	
	> 14 Yrs	0	0	0	0	0	0	0	0	0	0	0	0	0	0	
Hepatitis	< 5 Yrs	0	3	1	2	8	1	25	5	0	0	27	1	7	80	217
	5-14 Yrs	0	10	7	1	1	1	28	9	0	2	5	2	14	80	
	> 14 Yrs	0	5	0	0	0	0	47	2	0	0	0	0	3	57	
ILI	< 5 Yrs	61	233	147	19	25	30	25	239	0	27	50	16	10	882	2177
	5-14 Yrs	35	270	155	6	14	22	2	133	0	21	10	6	10	684	
	> 14 Yrs	39	220	226	1	0	3	6	55	0	36	3	10	12	611	
AFP	< 5 Yrs	0	0	0	0	0	0	0	0	0	0	0	0	0	0	0
	5-14 Yrs	0	0	0	0	0	0	0	0	0	0	0	0	0	0	
	> 14 Yrs	0	0	0	0	0	0	0	0	0	0	0	0	0	0	
Measles and rubella	< 5 Yrs	0	0	0	0	0	0	0	0	0	0	0	0	0	0	1
	5-14 Yrs	0	0	1	0	0	0	0	0	0	0	0	0	0	1	
	> 14 Yrs	0	0	0	0	0	0	0	0	0	0	0	0	0	0	
Tetanus	< 5 Yrs	0	0	0	0	0	0	0	0	0	0	0	0	0	0	0
	5-14 Yrs	0	0	0	0	0	0	0	0	0	0	0	0	0	0	
	> 14 Yrs	0	0	0	0	0	0	0	0	0	0	0	0	0	0	
Meningitis	< 5 Yrs	0	0	0	0	0	0	0	0	0	0	0	0	0	0	0
	5-14 Yrs	0	0	0	0	0	0	0	0	0	0	0	0	0	0	
	> 14 Yrs	0	0	0	0	0	0	0	0	0	0	0	0	0	0	
Local Malaria	< 5 Yrs	0	0	0	0	0	0	0	0	0	0	0	0	0	0	0
	5-14 Yrs	0	0	0	0	0	0	0	0	0	0	0	0	0	0	
	> 14 Yrs	0	0	0	0	0	0	0	0	0	0	0	0	0	0	
Rabies	< 5 Yrs	0	0	0	0	0	0	0	0	0	0	0	0	0	0	0
	5-14 Yrs	0	0	0	0	0	0	0	0	0	0	0	0	0	0	
	> 14 Yrs	0	0	0	0	0	0	0	0	0	0	0	0	0	0	
TB	< 5 Yrs	0	0	1	0	0	0	0	0	0	0	0	0	0	1	2
	5-14 Yrs	0	0	1	0	0	0	0	0	0	0	0	0	0	1	
	> 14 Yrs	0	0	0	0	0	0	0	0	0	0	0	0	0	0	
Others	< 5 Yrs	2	5	4	0	0	18	0	4	0	0	19	2	0	54	292
	5-14 Yrs	0	12	17	0	0	37	13	1	0	0	21	0	0	101	
	> 14 Yrs	0	9	10	0	4	44	60	6	0	0	4	0	0	137	
Total by age group	< 5 Yrs	101	320	216	26	47	60	84	262	0	30	136	30	17	1329	3362
	5-14 Yrs	49	352	239	7	22	71	73	150	0	23	46	18	25	1075	
	> 14 Yrs	64	257	300	1	4	49	139	63	0	36	7	22	16	958	
Grand Total		214	929	755	34	73	180	296	475	0	89	189	70	58	3362	